

## COMPOSITE SHEET



*This lightweight, fire resistant panel expands up to 15 times and is designed to seal large openings!*

SpecSeal<sup>®</sup> Composite Sheet is a lightweight, rigid fire resistant panel consisting of an intumescent layer bonded to a galvanized steel sheet reinforced with steel wire mesh covered with aluminum foil. SpecSeal Composite Sheet is designed to seal medium to large size openings with a variety of different penetrants in both fire resistance rated floors and walls.

When exposed to temperatures in excess of 350°F (177°C), SpecSeal<sup>®</sup> Composite Sheet expands up to 15 times to form a dense insulative char that minimizes heat transfer.

### FEATURES & BENEFITS

- **Lightweight** for easy handling and fabrication and less hanging weight on walls
- **Easy to cut** using sheet metal tools
- **Highly intumescent** – expands up to 15X
- **Hole Reduction** – Used in conjunction with other SpecSeal or EZ-PATH<sup>®</sup> Products for reducing large openings

### APPLICATIONS

SpecSeal<sup>®</sup> Composite Sheet is used in conjunction with other SpecSeal Firestop Products to seal penetrations through both fire resistance rated walls and floors for metallic and non-metallic pipes, insulated pipes, cable trays, cables, conduits, or blank openings. SpecSeal Composite Sheet provides an effective seal against fire, smoke, and combustion byproducts for openings of any shape in common construction assemblies.

- Medium to large openings through common constructions.
- Single or multiple cable trays for power, voice, data.
- Bus ducts.
- Multiple metallic conduits & tubing. Multiple mixed penetrants of many types.
- Blank Openings (penetrants removed).
- Suitable for clean room/area environment.
- Combine with the EZ-PATH System for cable penetrations through large openings.
- Plastic pipes.
- Insulated metallic pipes.
- Metal pipes.

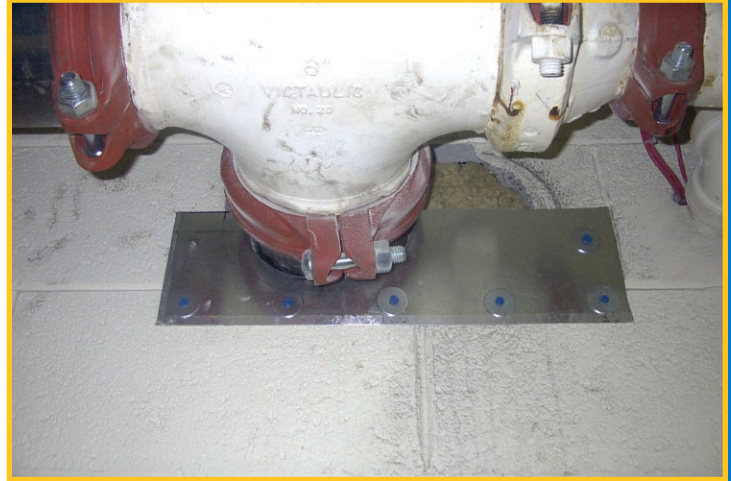


## PERFORMANCE

SpecSeal® Composite Sheet is the basis for firestop systems that meet the exacting criteria of ASTM E 814 (ANSI/UL 1479). ULSystems have been tested for all common forms of construction.

### PHYSICAL PROPERTIES

- **Product Name** - SpecSeal Composite Sheet
- **Nominal Thickness** - 0.1 in. (2.5 mm)
- **Nominal Weight** - 1.4 lb/ft<sup>2</sup> (6.9 kg/m<sup>2</sup>)
- **Intumescent**
- **Expansion Begins** - 350°F (177°C)
- **Volume Expansion** - 15X (typical free expansion)
- **Max. In-Service**
- **Temperature** - 130°F (54°C)
- **Radiation Exposure** - Unaffected
- **Shelf Life** - N.A.
- **VOC Content** - N.A.



### ORDERING INFORMATION

Part #	Description	Size
CS1628	Composite Sheet	16 x 28 in. (41 x 71 cm.)
CS2436	Composite Sheet	24 x 36 in. (61 x 92 cm.)
CS3636	Composite Sheet	36 x 36 in. (92 x 92 cm.)
CS3641	Composite Sheet	36 x 41 in. (92 x 104 cm.)
CS2852	Composite Sheet	28 x 52 in. (71 x 132 cm.)

#### WARRANTY

Specified Technologies manufactures its goods in a manner to be free of defects. Should any defect occur in its goods (within one year), Specified Technologies, Inc., upon prompt notification, will at its option, exchange or repair the goods or refund the purchase price.

#### LIMITATIONS AND EXCLUSIONS

THIS WARRANTY IS IN LIEU OF ALL OTHER REPRESENTATIONS EXPRESSED OR IMPLIED (INCLUDING THE IMPLIED WARRANTIES OF MERCHANTABILITY FOR FITNESS FOR USE) AND UNDER NO CIRCUMSTANCES SHALL SPECIFIED TECHNOLOGIES INC., BE RESPONSIBLE FOR ANY INCIDENTAL OR CONSEQUENTIAL PROPERTY DAMAGE OR LOSSES. PRIOR TO USE, THE USER SHALL DETERMINE THE SUITABILITY OF THE PRODUCT FOR ITS INTENDED USE, AND THE USER ASSUMES ALL RISKS AND LIABILITY FOR SUBSEQUENT USE.

No statement or recommendations not contained herein shall have any force or effect unless in an agreement signed by officers of seller and manufacturer.

#### MADE IN THE USA



Specified Technologies, Inc.  
 200 Evans Way  
 Somerville, NJ 08876 USA  
 Toll Free: 800-992-1180  
 Fax: (908) 526-9623  
 E-mail: specseal@stifirestop.com

[www.stifirestop.com](http://www.stifirestop.com)

SpecSeal® is a registered trademark of Specified Technologies, Inc.

UL® is a registered trademark of Underwriters Laboratories, Inc.

Copyright 2007.  
 All rights reserved

ZSTI3137