

READY™ SLEEVE PATHWAY KITS



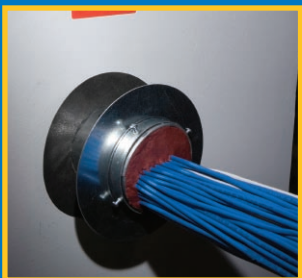
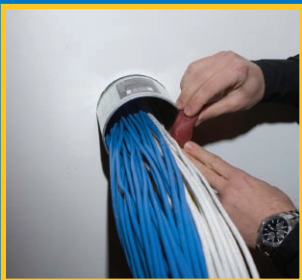
A complete UL[®] Classified solution for new and existing cable penetrations through walls!

SpecSeal[®] READY-SLEEVE™ pathway kits are complete UL Classified solutions for new and existing cable penetrations through walls and floors. Each sleeve kit contains:

- Precut Metallic Sleeve
- Mounting Escutcheons Plates
- Intumescent Escutcheon Gaskets
- Wall Warning Labels
- Putty Required to Seal Both Ends.

SpecSeal[®] READY-SLEEVE™ pathway kits are simple in design and installation. The original READY-SLEEVE™ (Cat Nos. FS) are engineered for new cabling installations. The 2 and 4 in. (51 and 102 mm) trade sizes incorporate a unique rolled lip design to eliminate potential sharp edges and the need for conduit bushings. The 1 in. (25 mm) trade size requires and includes a bushing.

The READY-SLEEVE™ Split Sleeve kits (Cat Nos. FSR) are designed for existing cable installations. The split sleeves are easily installed around an existing cable bundle. Two-piece split plates and gaskets capture the sleeve and lock it tightly to the barrier. All three sizes include a rolled lip for optimum cable protection.

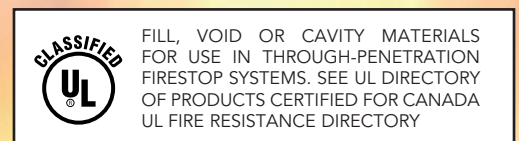


Features & Benefits

- **Economical** - Offers significant material and labor savings.
- **Ready to Install** - No cutting required, no waste!
- **Locks into Place** - No support struts and clamps required.
- **No External Firestop Seal Required** - Factory supplied intumescent firestop gasket.
- **Firestop Putty Provided with Kit** - Sufficient to seal ends to 1" (25 mm) depth.
- **UL Classified and Code Compliant**
- **For Rated and Non-Rated Barriers** - Putty seal impedes the passage of fire, smoke, superheated gases, particulate dust, and minimizes noise transmission.

APPLICATIONS

- Protect, support and seal cables routed through rated and non-rated walls & floors.
- All common constructions up to 10" (250 mm) thick.
- Available trade sizes 1" (33 mm OD), 2" (60 mm OD), 4" (114 mm OD).
- Standard small escutcheons for accurate gypsum board openings.
- Large escutcheons for concrete or masonry openings.



PERFORMANCE

SpecSeal® READY-SLEEVE™ pathways are UL tested and Classified in accordance with ASTM E814 (UL1479). Systems are available for cable penetrations through common wall constructions up to and including 4 hours.

PHYSICAL PROPERTIES

Properties	
Available Sizes:	White
Sleeve and Plate:	
Construction:	0.059" (1.5 mm) thick steel (zinc plated)
Intumescent Gasket	
Expansion Temperature:	350°F (177°C)
Volume Expansion:	15x (free expansion)
In-Service Temperature:	130°F (54.4°C)
Putty Fill Material	
Color:	Red
Odor:	None
Solids:	100%
Expansion Temperature:	230°F (110°C)
Volume Expansion:	8x (free expansion)
In-Service Temperature:	130°F (54.4°C)
VOC Content:	N/A
Shelf Life:	No Limit



ORDERING INFORMATION

Part #	Description	Qty.	Case Qty.
FS100	1" (25 mm) sleeve, escutcheon plates, gaskets, and putty	1	6
FS200	2" (51 mm) sleeve, escutcheon plates, gaskets, and putty	1	6
FS201	2" (51 mm) sleeve, escutcheon plates, gaskets, and putty	1	6
FS400	4" (102 mm) sleeve, escutcheon plates, gaskets, and putty	1	6
FS401	4" (102 mm) sleeve, escutcheon plates, gaskets, and putty	1	6
FSR100	1" (25 mm) split sleeve, escutcheon plates, gaskets, and putty	1	4
FSR200	2" (51 mm) split sleeve, escutcheon plates, gaskets, and putty	1	4
FSR400	4" (102 mm) split sleeve, escutcheon plates, gaskets, and putty	1	4

IMPORTANT NOTICE

All statements, technical information, and recommendations contained herein are based upon testing believed to be reliable, but the accuracy and completeness thereof is not guaranteed.

WARRANTY

Specified Technologies manufactures its goods in a manner to be free of defects. Should any defect occur in its goods (within one year), Specified Technologies, Inc., upon prompt notification, will at its option, exchange or repair the goods or refund the purchase price.

LIMITATIONS AND EXCLUSIONS

THIS WARRANTY IS IN LIEU OF ALL OTHER REPRESENTATIONS EXPRESSED OR IMPLIED (INCLUDING THE IMPLIED WARRANTIES OF MERCHANTABILITY FOR FITNESS FOR USE) AND UNDER NO CIRCUMSTANCES SHALL SPECIFIED TECHNOLOGIES INC., BE RESPONSIBLE FOR ANY INCIDENTAL OR CONSEQUENTIAL PROPERTY DAMAGE OR LOSSES. PRIOR TO USE, THE USER SHALL DETERMINE THE SUITABILITY OF THE PRODUCT FOR ITS INTENDED USE, AND THE USER ASSUMES ALL RISKS AND LIABILITY FOR SUBSEQUENT USE.

No statement or recommendations not contained herein shall have any force or effect unless in an agreement signed by officers of seller and manufacturer.

MADE IN THE USA



Specified Technologies, Inc.
 200 Evans Way
 Somerville, NJ 08876 USA
 Toll Free: 800-992-1180
 Fax: (908) 526-9623
 E-mail: specseal@stifirestop.com

www.stifirestop.com

SpecSeal® is a registered trademark of Specified Technologies, Inc.

UL® is a registered trademark of Underwriters Laboratories, Inc.

Copyright 2007.
 All rights reserved

ZST13179